



Western Cape Government

BETTER TOGETHER.

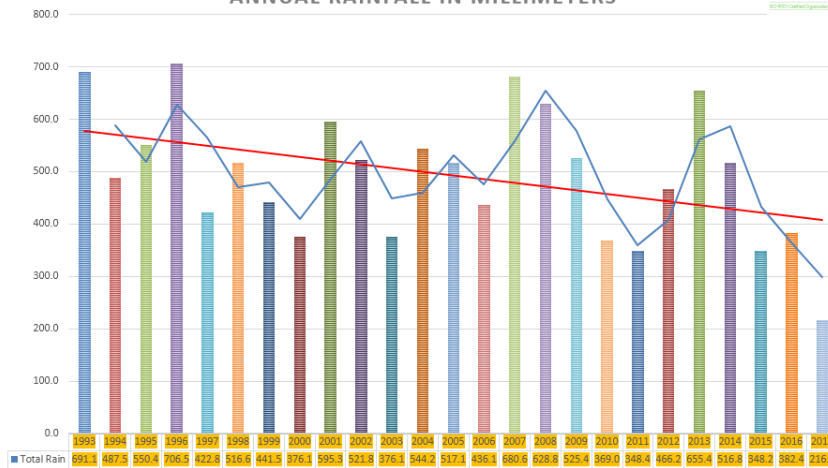


DROUGHT UPDATE

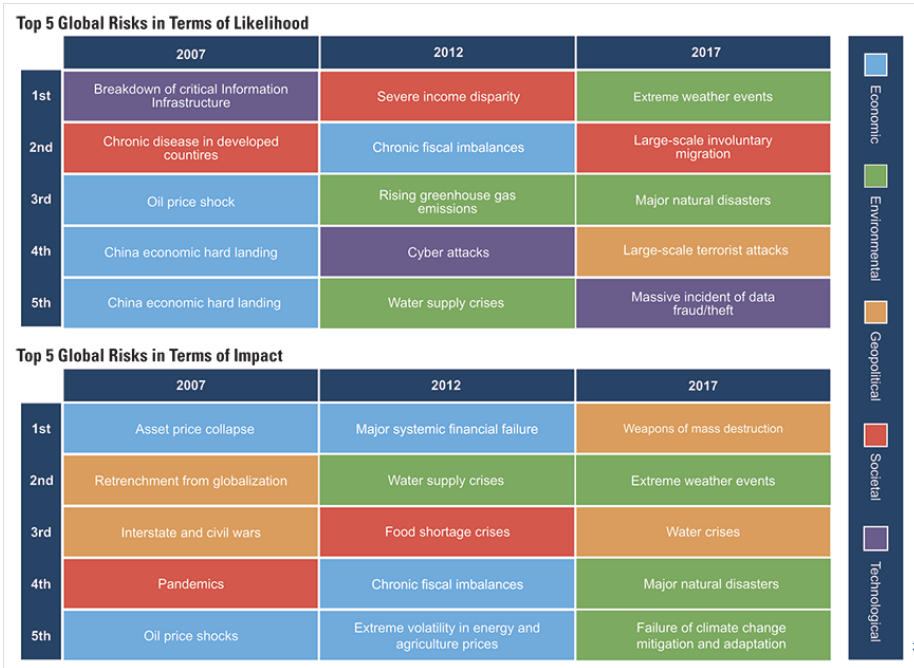
December 2017

Annual Rainfall figures for Cape Town Weather Office: 1993 till current.

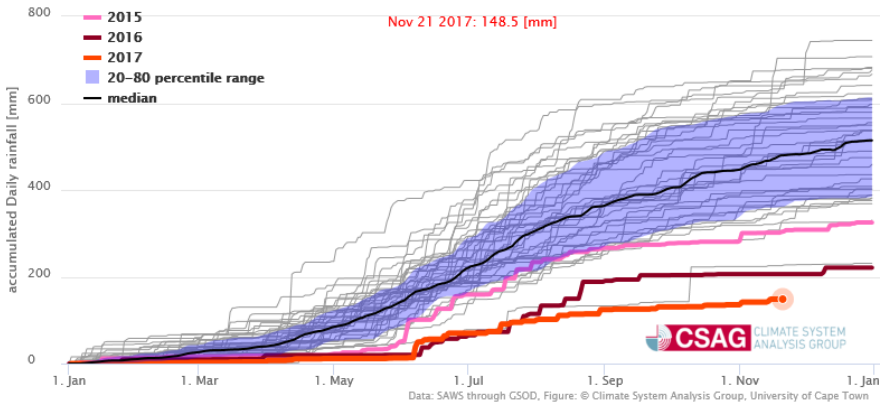
CAPE TOWN WEATHER OFFICE CLIMATE #: 0021178A3
ANNUAL RAINFALL IN MILLIMETERS



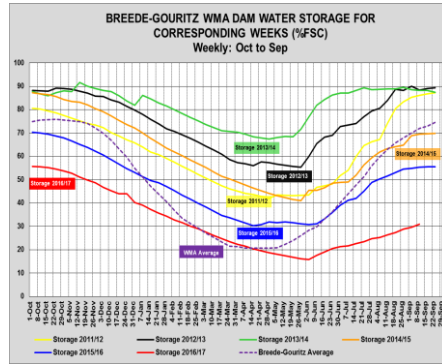
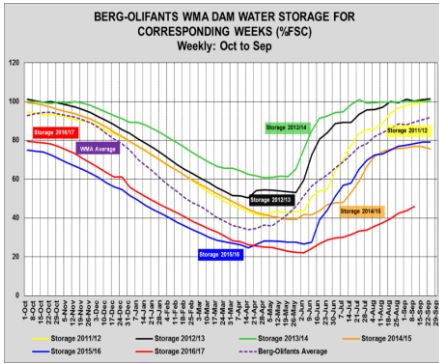
World Economic Forum 2017 Global Risk Report



Accumulated daily rainfall at Cape Town Airport



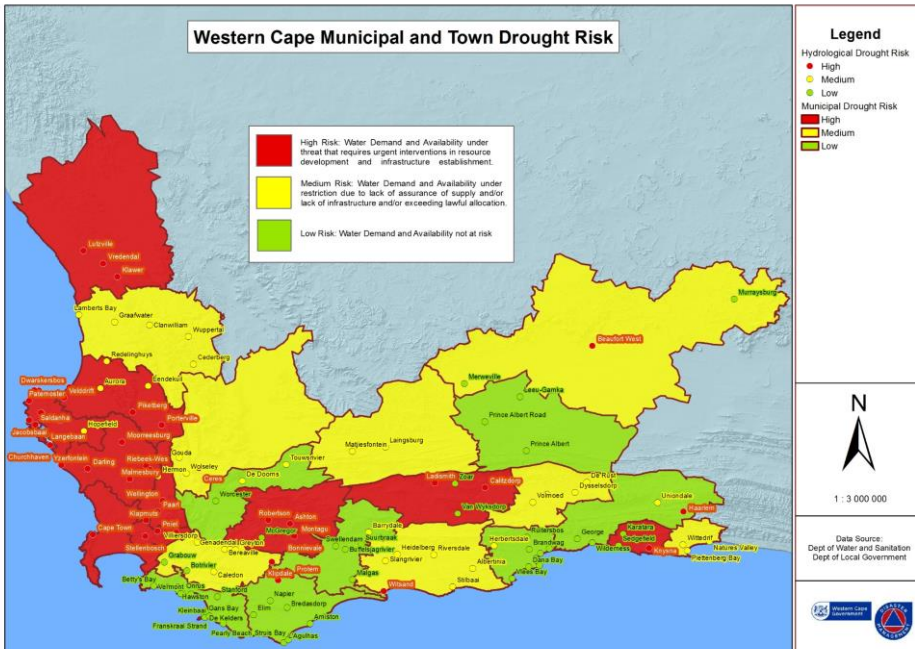
Water storage levels critically low in all catchments

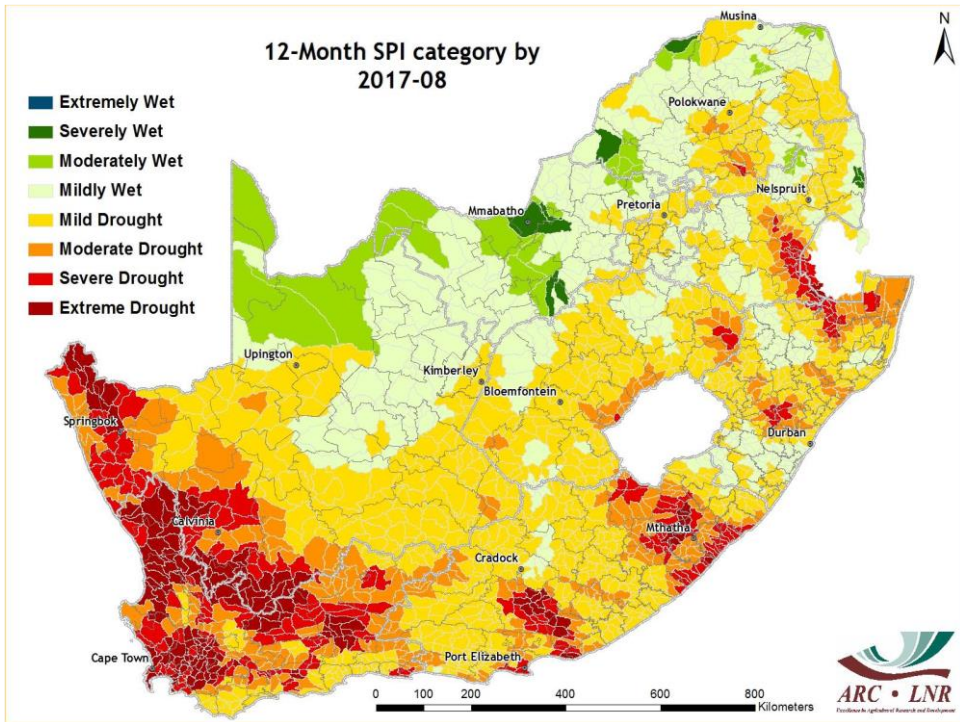


Source: National Department of Water & Sanitation

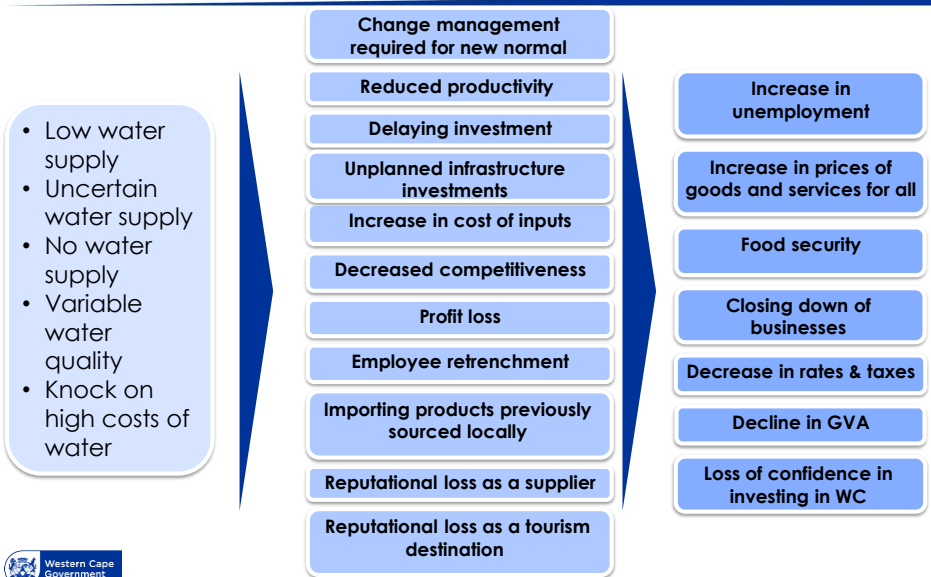


© Western Cape Government 2012 |





Economic impacts of water crisis



Sector focus

Highly & moderately intensive users:

- Agriculture & agri-processing
- Construction
- Manufacturing

Play a role in supporting change:

- Retail
- Insurance
- Tourism
- Property development

- Tourists use 3-8 times more water than residents in developing countries*
- 16 745 000 international tourist & 14 742 000 domestic tourist bed nights in WC = 27 393 ML/yr (@87 litres/p/d) = 75ML / day (conservative)
- 82 181ML/yr (3x 87 litres/p/d) = 225ML/day (3x)

Tourism

Adds stress to municipal water systems in peaks (which affects municipal peak demand without commensurate revenues) & potentially significant reputational risk of water shortages

*Source: Becken, S (2014) "Water Resources and Industry"; **Water Resources and Industry**, Vo.17-8, pp.9 – 22.



© Western Cape Government 2012 |



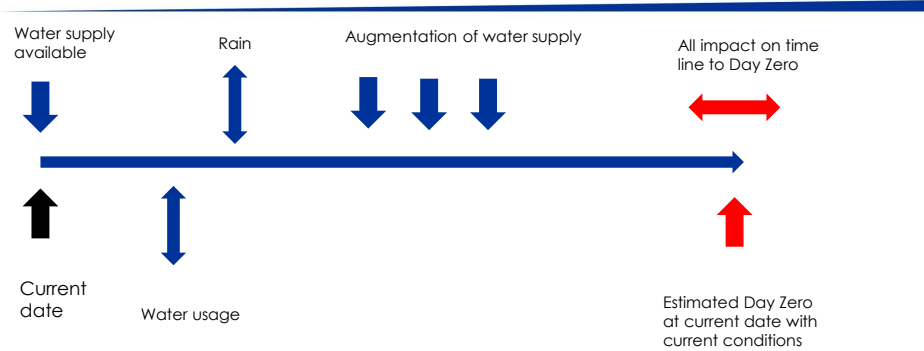
© Western Cape Government 2012 |



© Western Cape Government 2012 |

11

Time line towards possible “Day Zero”



- “Day Zero” will not arrive suddenly and unexpectedly
- Monitoring Disaster Management provides an early warning for surface water crisis for a specific municipality
- Contingency plans for the critical municipalities being developed
- Town specific plans are being developed, taking the local situation and conditions into account.



© Western Cape Government 2012 |

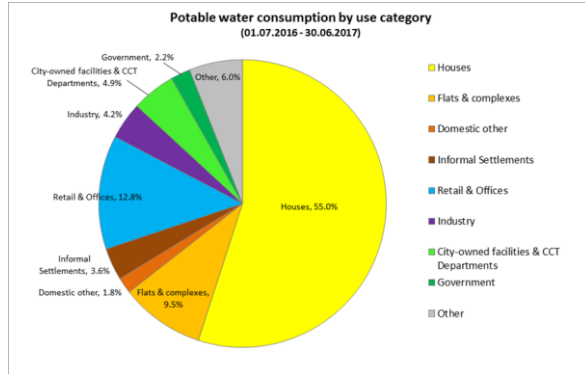
12

CAPE TOWN DISASTER PHASES

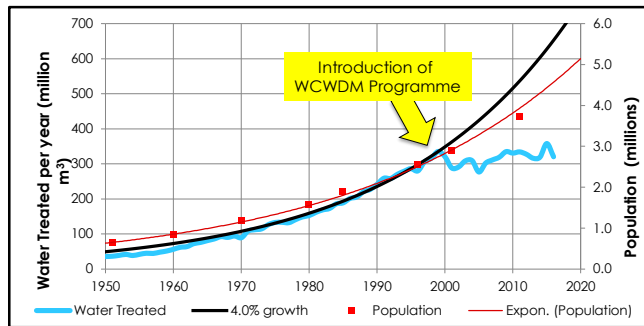


WE ARE HERE

**LEVEL 5 Restrictions
Phase 1 Disaster
Management**



EFFECTIVENESS OF WCWM – 2000 TO PRESENT



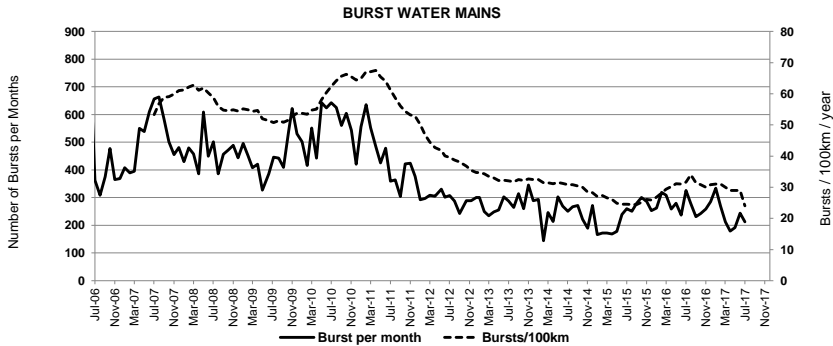
Water demand growth delinked from population growth
 Current water demand lower than 20 years ago – population increased by 1 million

CAPE TOWN WATER LOSSES

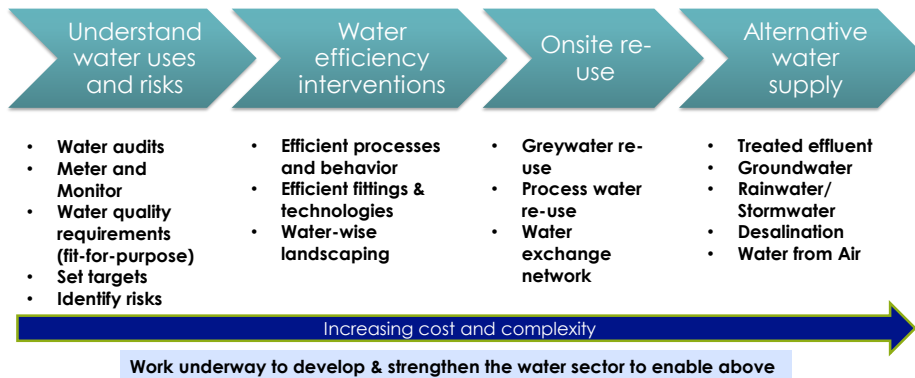
METRO	DWS REPORT (2013)		SALGA's MBI (2015)	
	Water Loss %		Water Loss %	
City of Cape Town	15.2		14.7	
City of Johannesburg	36.5		24.8	
eThekweni	35.3		38.2	
Ekurhuleni	31.8		33.9	
Tshwane	22.9		22.4	
Nelson Mandela Bay	32.4		38.2	
Buffalo City	37.1		38	
Mangaung	35.7		28.3	
Msunduzi			32.9	
Average of above	30.9		30.2	
DWS & MBI Average	29.7		27.9	

National average for water losses as per the DWS "Strategic Overview of the Water Sector in South Africa 2017" puts national average for water loss across municipalities at 37%.

CAPE TOWN PIPE BURST STATISTICS



Water-Saving: Reducing economic risks



Source: GreenCape



© Western Cape Government 2012 |

| 17

Event considerations: Demand changes & Emergency Planning

1) Work out your real need – actual minimum vs historic use

2) Don't compromise health – right water for the right job (the closer to your mouth the cleaner it needs to be)

3) What demand changes can you make reduce water usage?

- **Behaviour** – change the way you think about water – bring your own bottle, waterless products, type of water e.g non potable for certain tasks.
- **Control** – on site tanks or linked to municipal supply
- **Venue** - SAVE BY DESIGN- request information on venue water usage
- **Team up** with accommodation venues (FEDHASA championing reduction in usage)
- **Awareness** – signage, notice in announcements, practical hints, ethos from the beginning



© Western Cape Government 2012 | Go to Insert > Header & Footer > Enter presentation name into footer field

18

Event considerations: Demand changes & Emergency Planning cont.

- 3) **Sanitation needs** – water-less options. If traditional flush system has no water or low water pressure the toilet facilities are compromised.
- 4) **Educate yourself and ask for assistance** – Municipality here to guide and assist and ensure they are ready for the peak requirements
- 5) **Donate** – Built in fundraising/donation option - there are already families out of work and desperate because of the drought and avian flu. Red Cross and Gift of the Givers set up to assist by WCG Dept of Social Development.



© Western Cape Government 2012 | Go to Insert > Header & Footer > Enter presentation name into footer field

19



Thank You

**Water saving
starts with
US...**

Beaufort West Dam
8 Nov 2017
Photo: J B Styan

Contact Us



Water-Saving: Key support contacts for businesses

For technical business support incl:	water@green-cape.co.za
<ul style="list-style-type: none"> • Case studies • Benchmarking • Linking with water tech suppliers • Technology choices, etc. 	http://www.greencape.co.za/content/focus-area/business-support
For agricultural businesses see GreenAgri tools and water-related research	http://www.greenagri.org.za/
For general water for the economy programme support incl.:	helen.davies@westerncape.gov.za
<ul style="list-style-type: none"> • Industry engagements • Links with municipalities • Licensing issues • Contingency planning • Website updates • Business related communication materials 	karen.shippey@westerncape.gov.za (contingency planning)

RESOURCES

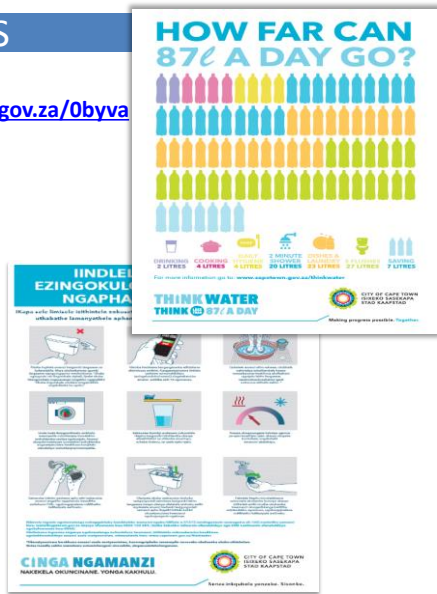
Resources available for download <http://cct.gov.za/0byva>

Posters include:

- How Far Can 87 Litres a Day Go?
- Find and Fix Leaks (Eng, Afr, Xho)
- Top Ways to Save Water Indoors (Eng, Afr, Xho)

Other;

- Offline Water Use Calculator – zipped



www.capetown.gov.za/thinkwater

THINK WATER
CARE A LITTLE. SAVE A LOT.

Calculate your daily water usage

<http://bit.ly/ThinkWaterCalculatorCT>

Check “Day Zero “ on the dashboard



Weekly updates:
[http:// coct.co./water-dashboard/](http://coct.co./water-dashboard/)

DAY ZERO 20 | 05 | 2018

THE DAY THE TAPS WILL BE TURNED OFF

Only if Capetonians reduce their use down to 87 litres or less per day, and the City implements the necessary projects, will we avoid Day Zero. To find out what you can do, visit www.capetown.gov.za/thinkwater

<p style="font-weight: bold; margin: 0;">THE CITY</p> <p style="font-size: 0.8em; margin: 0;">The City's progress on securing alternative water sources.</p>	<p style="font-weight: bold; margin: 0;">THE DAMS</p> <p style="font-size: 0.8em; margin: 0;">Combined level of dams supplying the city. For more info click here</p>	<p style="font-weight: bold; margin: 0;">CAPETONIANS</p> <p style="font-size: 0.8em; margin: 0;">Percentage of residents using 87l or less per day.</p>
--	---	---

Possible donation items for WCG Dept Social Development to distribute

- Food stuff (dry food items, tinned food, **fresh fruit and vegetables**)
- Sealed bottled water
- Baby food (non refrigerated food)
- Disposable baby and adult nappies
- Wet wipes and waterless sanitisers
- Toiletries/ Sanitary packs (both females and males)
- Toys (unbroken toys)
- Books (children friendly)
- Pet Food



Contact: Mr CAESAR SAULS – WCG Dept Social
Development
Phone: 021 483 3839
Email:
Caesar.Sauls@westerncape.gov.za



Possible donation of services for humanitarian relief

PROVINCIAL NGO PARTNERS

RED CROSS

Contact: Ms Levona Van Aarde
WC Provincial Manager and
National Operations and Disaster Manager
Phone 021 7975360
Email :lvanaarde@redcross.org.za



GIFT OF THE GIVERS

Website: <http://www.giftofthegivers.org/>
Phone : +27 (0) 21 691 0057 | +27 (0) 21 691 0043
Email : gawa@giftofthegivers.org

- Agreements being signed with DSD for co-ordination and allocation of donations of cash and kind so it is not delayed moving through Government Systems.



Cape Town Disaster Response Management : Volunteer Units

- 14 DRM Units (approx. 400 trained response volunteers)
 - AED – defibrillator - R20000-00 x 15
 - Basic life support jump bags complete – R1500-00 x 30
 - Spine boards – plastic – R1500-00 x 15
 - Glucometers – R350-00 x 30
 - KED Extrication Device – R1100-00 x 15
 - Leg traction unilateral splint –R2500-00 x 15
 - Aluminium folding back board – R2800-00 x 15
 - Porta Vac Suction device – R8000-00x 15
 - Bushbeaters for fire suppression – R150-00 x 60
 - Safety protection gear for fire fighting(jump suit)- R2000-00 x 100

Mr JOHN BROWN
(City of Cape Town)
Tel: 0214448200 office
Email: JohnBayly.Brown@capetown.gov.za

