

THE INFORMAL SETTLEMENT SUPPORT PROGRAMME (ISSP)

Finding solutions together

Housing is one of the biggest challenges in South Africa, with the need for affordable housing far outweighing government's ability to deliver.

Due to this challenge, people have created housing solutions using available resources and materials. In an effort to improve their living conditions in an informal settlement, the Western Cape Government strives to provide access to water, sanitation, electricity, tenure security, and shelter.

A There is a big demand for housing

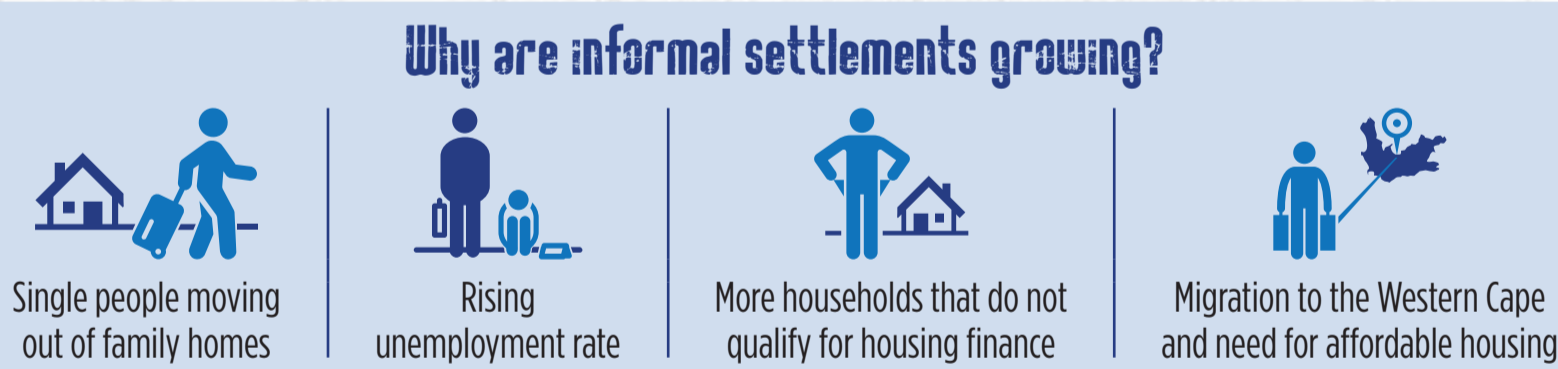
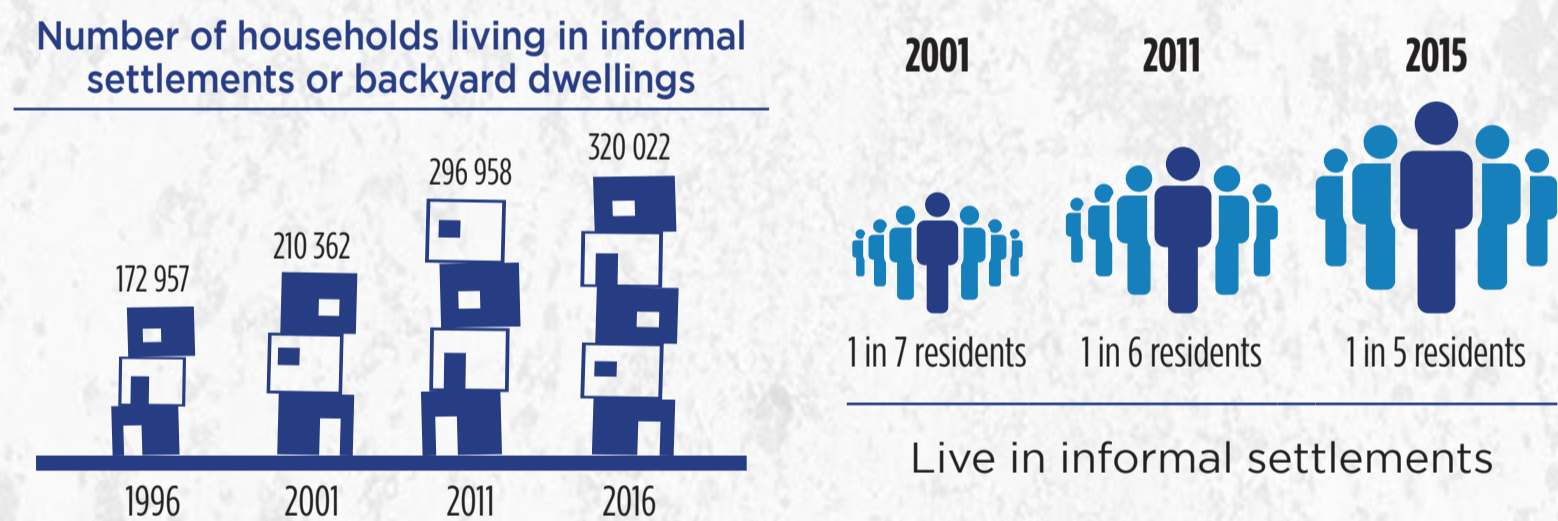
Almost **1 in 3** households in the Western Cape are in need of adequate housing. The biggest demand for housing is in the City of Cape Town.

B Housing delivery in the Western Cape cannot meet the demand

Did you know that the Western Cape Government has been providing about **20 000** housing opportunities per year since 2009? But the demand is much higher than that and providing housing to everyone in need will take a very long time.

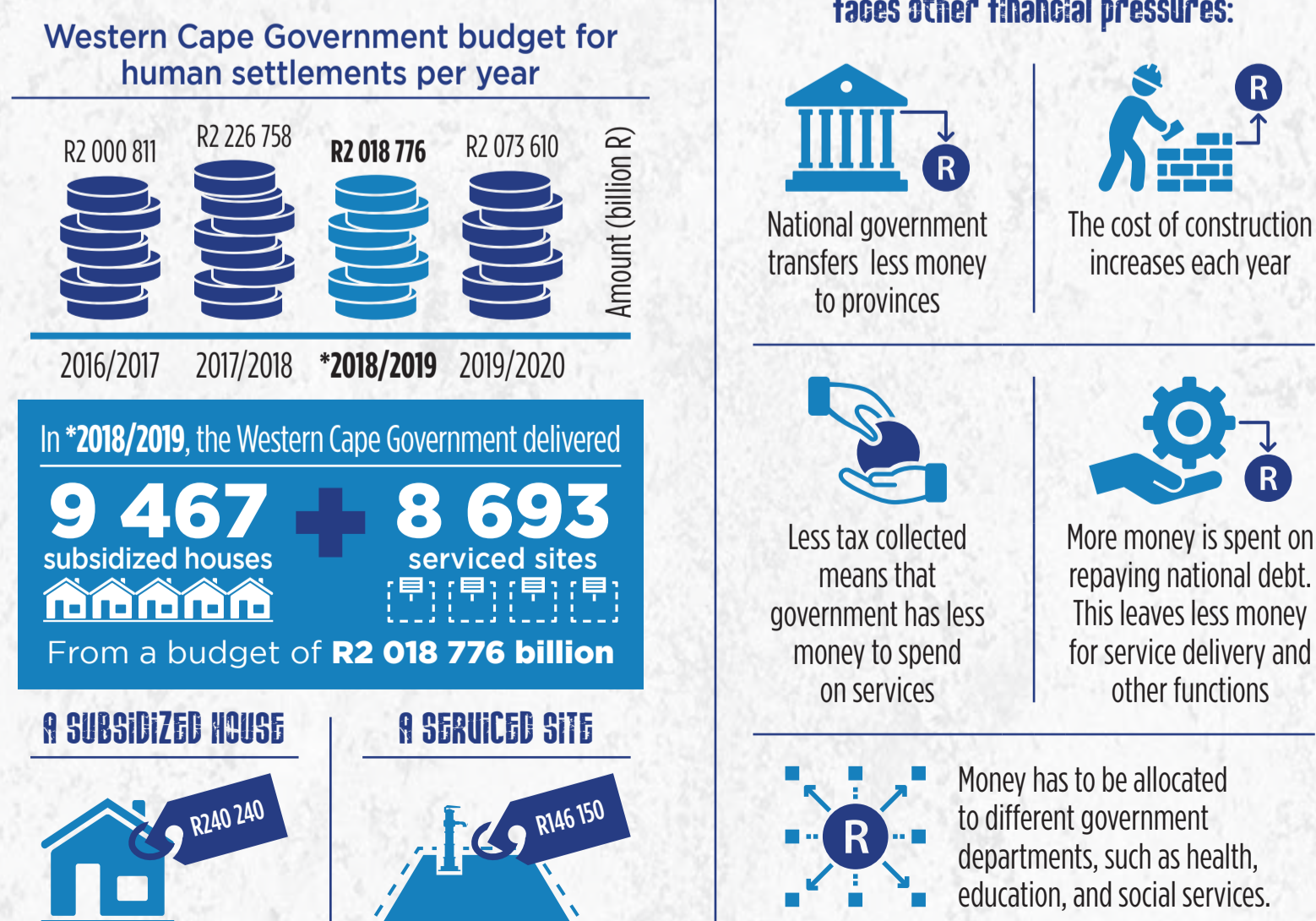
C A large and growing number of people live in informal settlements

22% of households in the Western Cape live in informal settlements or backyard dwellings. Informal settlements are growing faster than the municipality's ability to deliver housing and provide serviced sites.



D Government faces financial pressures

Informal settlements are growing, but government budgets are not.



5 Important parts of upgrading your informal settlement

The various parts of upgrading can improve the quality of life in your informal settlement. Over time, your settlement will develop into a dignified and safe neighbourhood.



1 COMMUNITY-BASED PLANNING
Your community and municipality working together to find solutions and plan for upgrading. The aim is to meet the community's needs.

2 TENURE OPTIONS
Finding the most suitable form of security that protects you from evictions and allows you to build, rent and sell.

These parts should work to connect your informal settlement to other parts of the municipality, and to job opportunities, schools, clinics and other important public services.

3 ESSENTIAL SERVICES
Ensuring that you have access to basic services such as water, electricity, sanitation, and waste removal for you to live in dignity.

5 HOUSING CONSOLIDATION
Improving your house or property over time, by building a simple top structure, or investing in extensions to increase its size, quality and value.

4 COMMUNITY FACILITIES
Schools, clinics, good quality public open-spaces and community halls should be provided to meet your community needs.

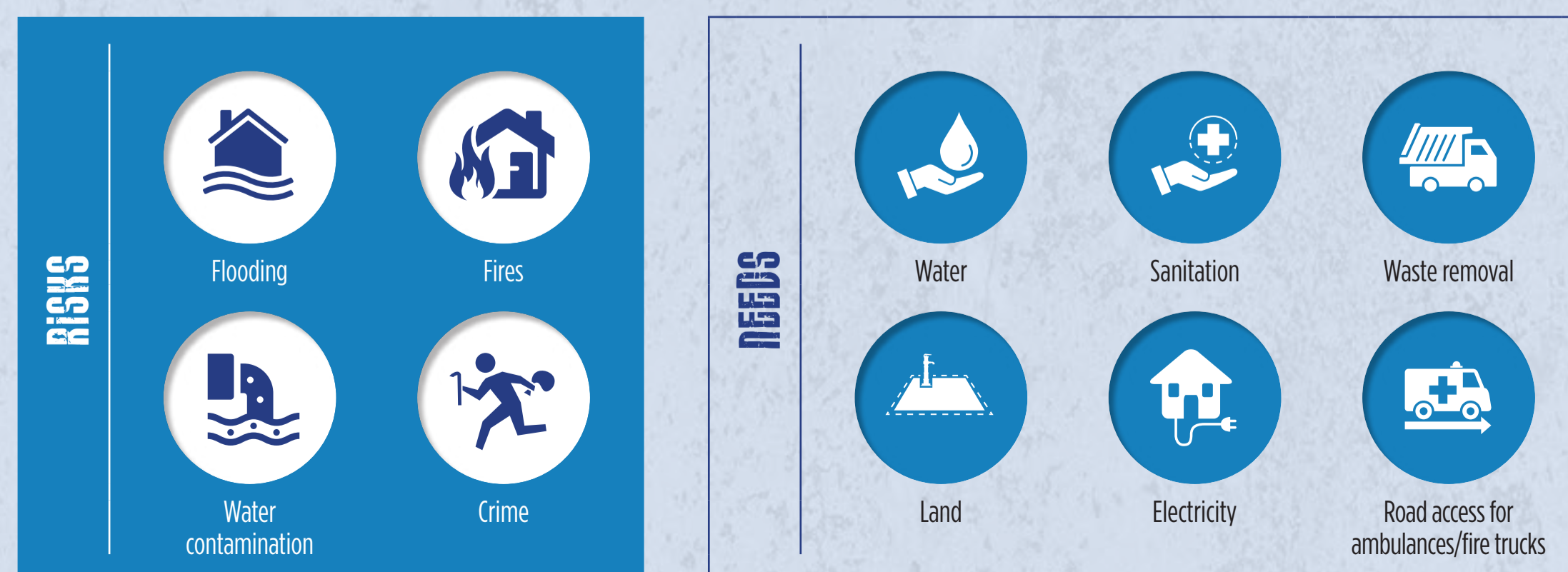
When these parts come together, you are empowered to take part in the development of your own neighbourhood.

Take part in transforming your community

E Upgrading addresses your challenges and needs

You may not have access to municipal services, roads/pathways, drainage systems and other services in an informal settlement. This poses many health and safety risks, and does not cater for your needs.

Your municipality is responsible for addressing this.



G The Informal Settlement Support Programme (ISSP) is here to support you

The ISSP is a new, **people-centred and partnership-based** approach to support informal settlement residents across the Western Cape and improve their living conditions.

The first cycle of projects aims to develop about **25 000 serviced sites**. Over time, residents will have access to public infrastructure, finance, land, tenure, economic opportunities and incremental housing opportunities.

This is a **new direction** for municipalities and provincial government in the Western Cape to address the housing challenge.

The ISSP is committed to:

- Working together with communities and other partners
- Protecting the rights of vulnerable groups
- Improving the health, safety and dignity of people living in informal settlements
- Using natural resources wisely and making sure that solutions are sustainable
- Step-by-step in situ development of informal settlements over time

The Western Cape Government is responding to your shelter and livelihood needs.

F Communities and government can do more when they work together

What can YOU do?

- Find out from your municipality when the upgrading of your settlement will take place.
- Register your need for housing, if you qualify.
- Help to set up or be part of a community structure that your municipality can engage with.
- Attend community meetings to discuss what is important to you.
- You know your settlement best. Offer your skills and knowledge in the planning of the project.
- Find out what other organisations can support your community and reach out to them.
- Make sure no one in your community is left behind.
- Start saving small for the future.
- Ask for regular updates on the implementation of the project.

Better livelihoods and better neighbourhoods are possible because we're BETTER TOGETHER.